

Engine	Cummins QSK19
Gross Power	418 kW (560 hp) @ 2,000 rpm
Net Power	397 kW (532 hp) @ 2,000 rpm
Operating Weight	52,000 kg
Standard Bucket Size	7.0 m <sup>3</sup>
Standard Breakout Force	395 kN
Standard Dump Clearance	3,910 mm

# 8128H

WHEEL LOADER



# 8128H SPECIFICATIONS >>>

## ENGINE

Emission Regulation	Tier 3/Stage IIIA
Make	Cummins
Model	QSK19
Gross Power	418 kW (560 hp) @ 2,000 rpm
Net Power	397 kW (532 hp) @ 2,000 rpm
Peak Torque	2,644 N · m
Displacement	19 L
Number of Cylinders	6
Aspiration	Turbocharged & Air-to-air intercooled

## TRANSMISSION

Transmission Type	Countershaft, power shift
Torque Converter	Single stage, three elements
Maximum Travel Speed, fwd	35.6 km/h
Maximum Travel Speed, rev	35.6 km/h
Number of Speeds, fwd	4
Number of Speeds, rev	4

## AXLES

Differential Front Type	Limited slip
Differential Rear Type	Conventional
Axle Oscillation	± 12°

## STEERING

Steering Configuration	Articulated
Steering Relief Pressure	21 MPa

## BRAKES

Service Brake Type	Wet discs brake
Service Brake Actuation	Hydraulic
Parking Brake Type	Manual
Parking Brake Actuation	Hydraulic

## HYDRAULIC SYSTEM

Main Pump Type	Piston
Main Relief Pressure	26 MPa
Raise	8.5 s
Dump Time	2.08 s
Float Down Time	4 s
Fastest Total Cycle Time	14.58 s

## LOADER ARM PERFORMANCE

Tipping Load - Straight	38,900 kg
Tipping Load - Full Turn	32,600 kg
Bucket Breakout Force	395 kN
A Maximum Hinge Pin Height	5,645 mm
B Dump Clearance at Full Height Discharge	3,910 mm
C Dump Reach at Full Height Discharge	2,050 mm
D Maximum Digging Depth, Bucket Level	137 mm
S <sub>1</sub> Bucket Rollback at Ground Level	43°
S <sub>2</sub> Bucket Rollback at Carry	49°
S <sub>3</sub> Bucket Rollback at Maximum Height	59°
S <sub>4</sub> Maximum Dump Angle at Full Height	45°

## BUCKET PERFORMANCE

Reference Bucket	7.0 m <sup>3</sup>
------------------	--------------------

## DIMENSIONS

E Ground Clearance	480 mm
G Wheelbase	4,550 mm
H Cab Height	4,195 mm
J Wheel Tread	2,700 mm
K Width Over Tires	3,590 mm
L Length with Bucket Down	11,845 mm
M Turn Angle, Either Side	43°
P Rear Angle of Departure	25°
R <sub>1</sub> Turning Radius, Bucket Carry	8,620 mm
R <sub>2</sub> Turning Radius, Outside of Tire	7,620 mm

## TIRES

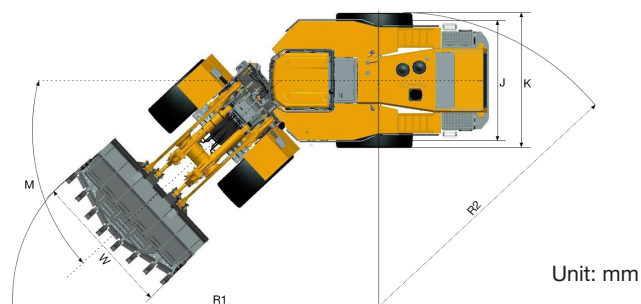
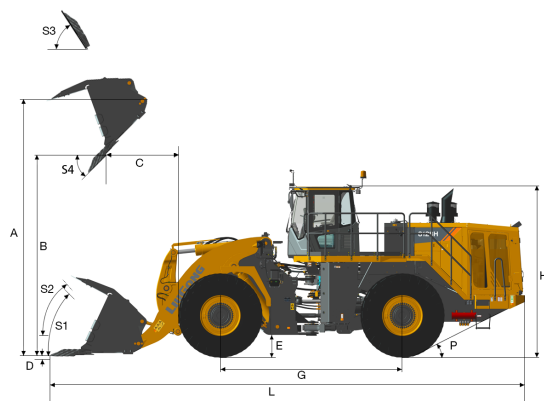
Tire Size	35/65 R 33
-----------	------------

## OPERATING WEIGHTS

Operating Weight	52,000 kg
------------------	-----------

## SERVICE CAPACITY

Fuel Tank	667 L
Engine Oil	60 L
Cooling System	95 L
Hydraulic Reservoir	515 L
Transmission and Torque Converter	140 L
Axles, each	115 L



Unit: mm

Guangxi Liugong Machinery Co., Ltd.

No. 1 Liutai Road, Liuzhou, Guangxi 545007, PR China

T: +86 772 3886124

E: overseas@liugong.com

www.liugong.com

Specifications and designs are subject to change without notice. Machines shown may include optional equipment.

09/2017 Designed by LiuGong